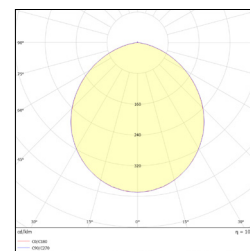
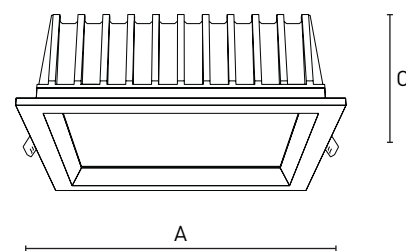
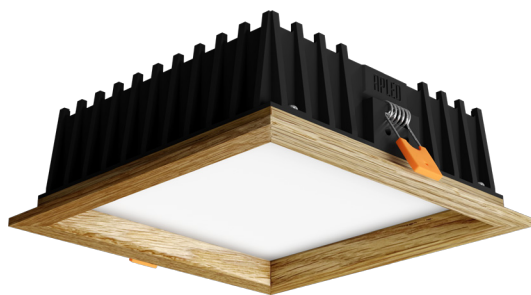


SQUARE WOODLINE RECESSED

LED interior lighting



TECHNICAL PARAMETERS

Voltage	AC 90–265 V	Diffuser	PMMA
Frequency range	50 ~ 60 Hz	LED chips	SMD
Working temperature	-40 °C až +35 °C	Protection class	II.
Colour rendering index	80 Ra	Material	wood / ASA
IP rating	IP 20	LED Driver	standard
Lifetime	50 000 h	Mounting	recessed
Beam angle	105°		

PRODUCT VARIANTS

ORDER NUMBER	WATTAGE	COLOR TEMPERATURE	LUMINOUS FLUX	LUMINAIRE EFFICACY	COLOR	WEIGHT	ENERGY CLASS	A (mm)	C (mm)
21283	3 W	4000 K	206 lm	69 lm / W	Oak	0,12 kg	G	90	36
21284	3 W	3000 K	187 lm	62 lm / W	Oak	0,12 kg	G	90	36
21285	6 W	4000 K	558 lm	93 lm / W	Oak	0,20 kg	F	120	46
21286	6 W	3000 K	525 lm	88 lm / W	Oak	0,20 kg	F	120	46
21287	12 W	4000 K	1281 lm	107 lm / W	Oak	0,35 kg	E	170	58
21288	12 W	3000 K	1179 lm	98 lml / W	Oak	0,35 kg	E	170	58
21289	3 W	4000 K	206 lm	69 lm / W	Pine	0,12 kg	G	90	36
21290	3 W	3000 K	187 lm	62 lm / W	Pine	0,12 kg	G	90	36
21291	6 W	4000 K	558 lm	93 lm / W	Pine	0,20 kg	F	120	46
21292	6 W	3000 K	525 lm	88 lm / W	Pine	0,20 kg	F	120	46
21293	12 W	4000 K	1281 lm	107 lm / W	Pine	0,35 kg	E	170	58
21294	12 W	3000 K	1179 lm	98 lml / W	Pine	0,35 kg	E	170	58
21295	3 W	4000 K	206 lm	69 lm / W	Ash	0,12 kg	G	90	36
21296	3 W	3000 K	187 lm	62 lm / W	Ash	0,12 kg	G	90	36
21297	6 W	4000 K	558 lm	93 lm / W	Ash	0,20 kg	F	120	46
21298	6 W	3000 K	525 lm	88 lm / W	Ash	0,20 kg	F	120	46
21299	12 W	4000 K	1281 lm	107 lm / W	Ash	0,35 kg	E	170	58
21300	12 W	3000 K	1179 lm	98 lml / W	Ash	0,35 kg	E	170	58